



InnoDisk Corporation
Ready Boost Memory

Datasheet

Version 1.0

Jan. 2007

- 1. General Description - 3 -
- 2. Electrical specification - 4 -
- 3. How to use Ready Boost Memory - 5 -
- 4. Application - 7 -
- 5. Mechanical - 9 -

Document Revision History

Revision	Release Date	Author	Remark
1.0	01/23/2007	C.C.	Draft

1. General Description

Ready Boost Memory is a fixed mode of Flash Disk, and plugging on mother board directory. Ready Boost Memory is designed for Windows Vista's new feature ReadyBoost. Ready Boost Memory is not a normal USB Flash disk because it has dual rows female 10 Pins USB connectors (Figure 4) is different from male USB connector. ReadyBoost requires high random read/write speed, so not all USB Flash Disk can support ReadyBoost Function.

Windows ReadyBoost can improve system performance because it can retrieve data kept on the flash memory more quickly than it can retrieve data kept on the hard disk, decreasing the time you need to wait for your PC to respond. Combined with SuperFetch technology, this can help drive impressive improvements in system responsiveness.

2. Electrical specification

- Power Consumption:
 - Read Mode: 75mA
 - Write Mode: < 100mA
 - Waiting Mode: 50mA
 - Suspend Mode: < 0.5mA
- Power Supply: DC 5V
- Interface: High Speed USB 2.0(480 Mb/s).
- Operating Temperature: 0 to 65°C ,
- Non-Operating Temperature: -20°C to 75°C

3. How to use Ready Boost Memory

- Find the USB port on the mother board.(Figure 1)

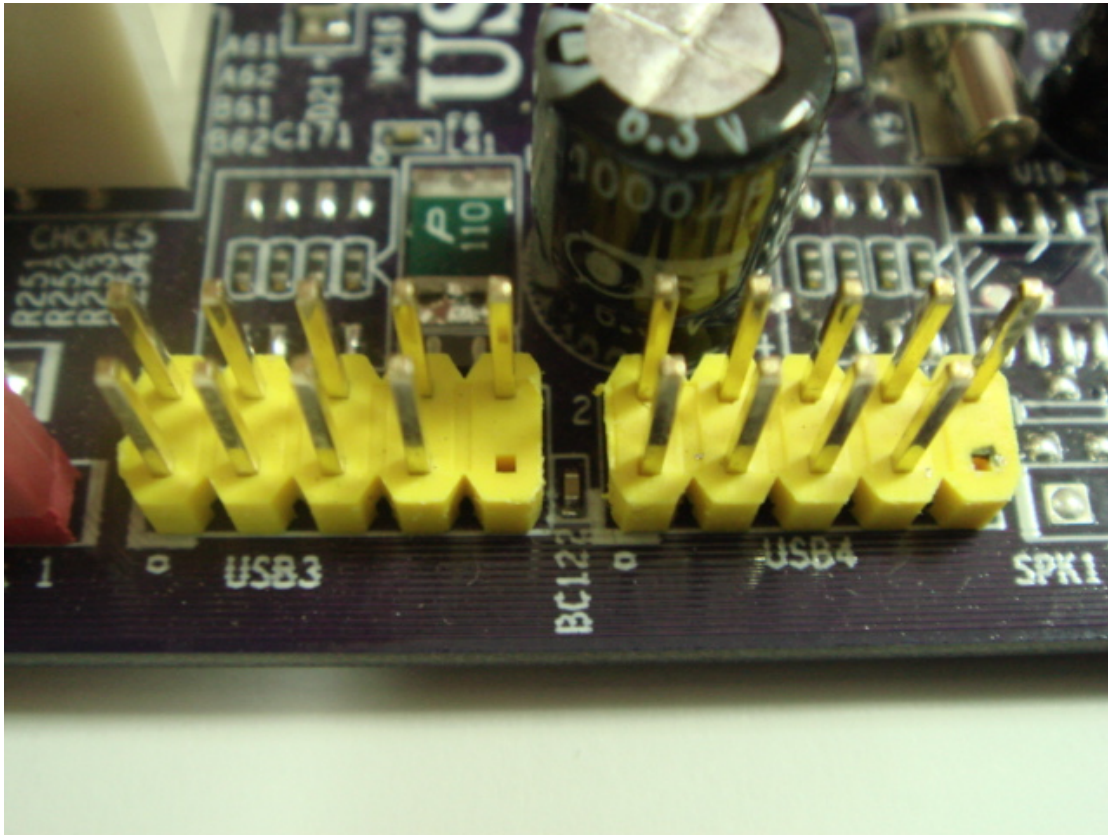


Figure 1

- Plug in the Ready Boost Memory into a USB Port. Both ports can be used.(Figure 2,3,4)

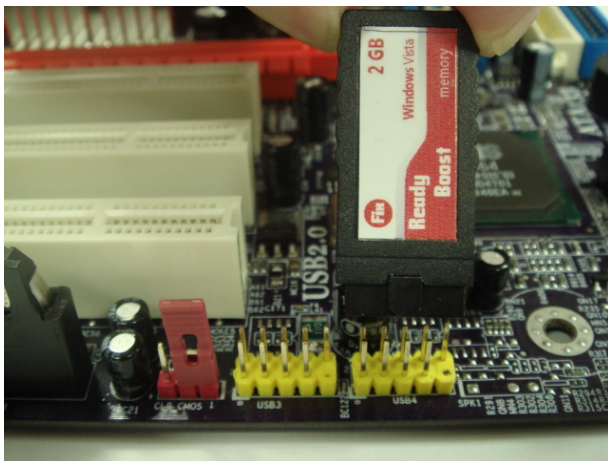


Figure 2

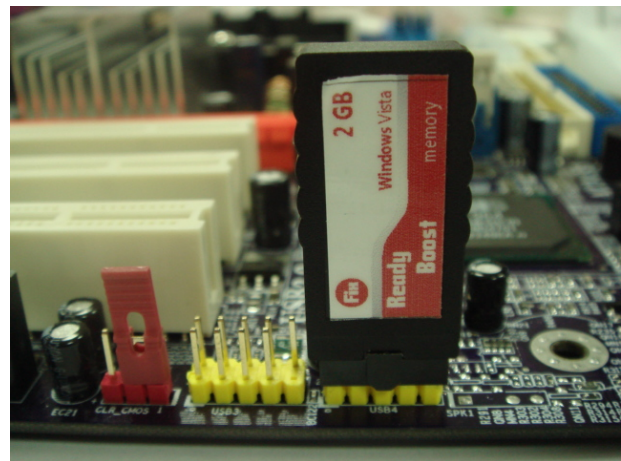


Figure 3

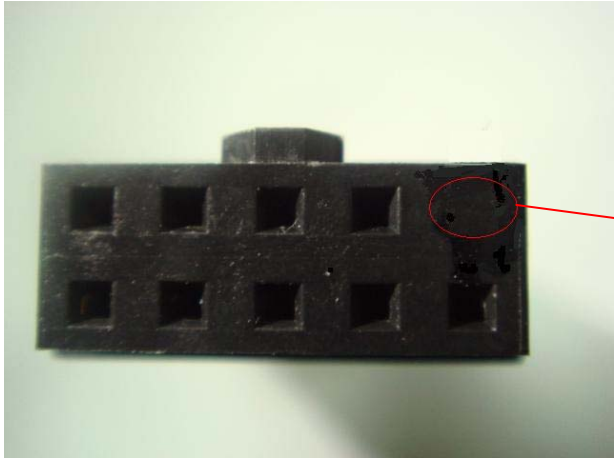


Figure 4

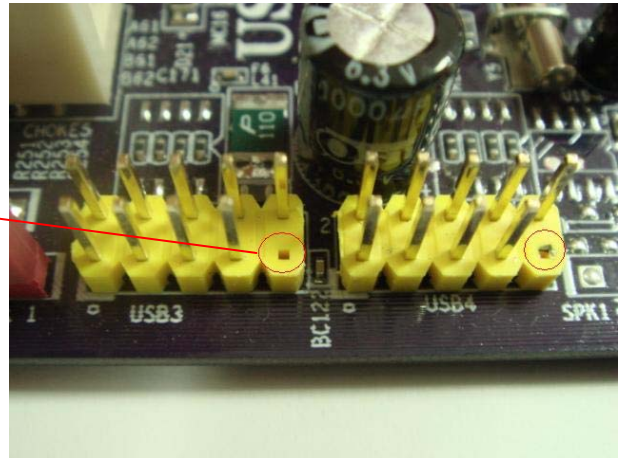


Figure 5

- You can power on your PC now.

4. Application

- Basic features
 - Operation System Supported: Microsoft Windows Vista
 - Performance:
 - 5 MB/sec throughput for random 4k reads across the entire device.**
 - 3 MB/sec throughput for random 512k writes across the entire device**
 - Capacity: 1GByte, 2GByte, 4GByte.
 - Data Bus: Single Channel.
- How to enable ReadyBoost in Windows Vista.
 - Step 1: Open [My Computer], and find the ReadyBoost drive letter. Click on properties. You will find ReadyBoost Memory Label” READYBOOST” in properties screen. (As figure 6)

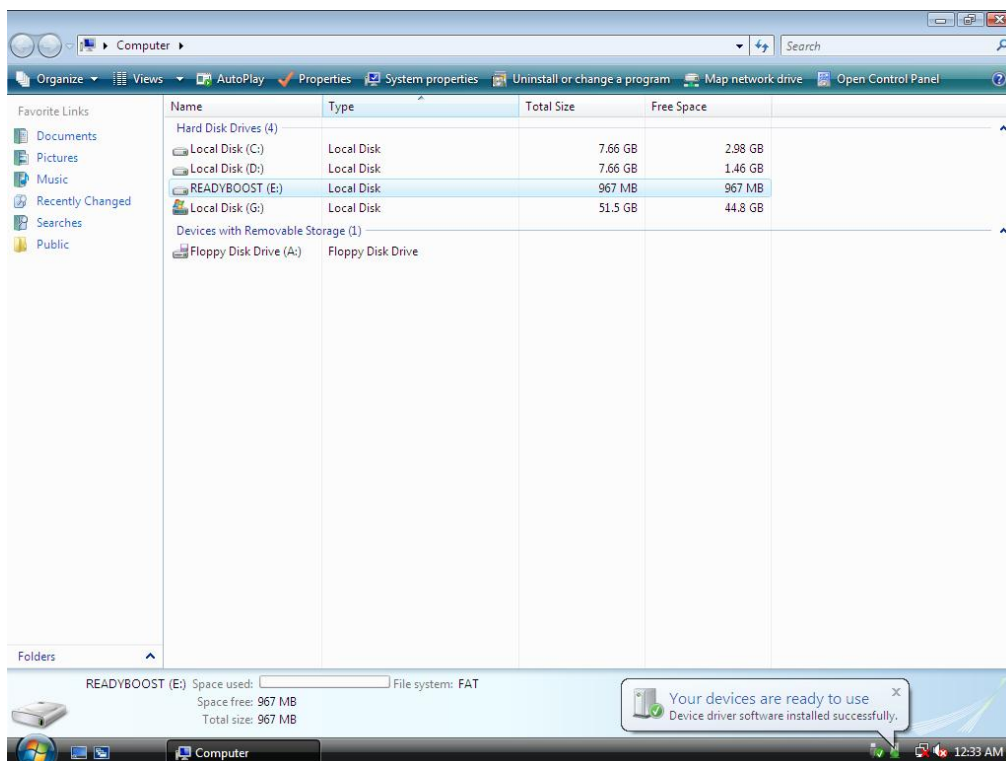


Figure 6

Step 2: You can select the ReadyBoost Memory capacity by pulling the scroll bar (As figure 7). Recommend that you use total capacity for ReadyBoost.

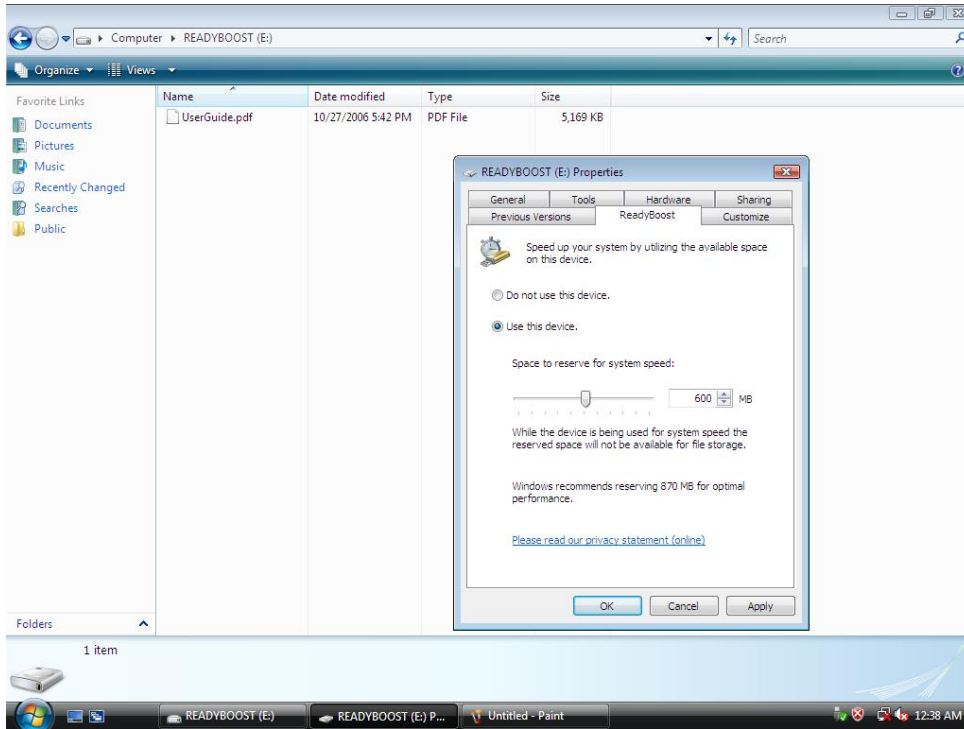
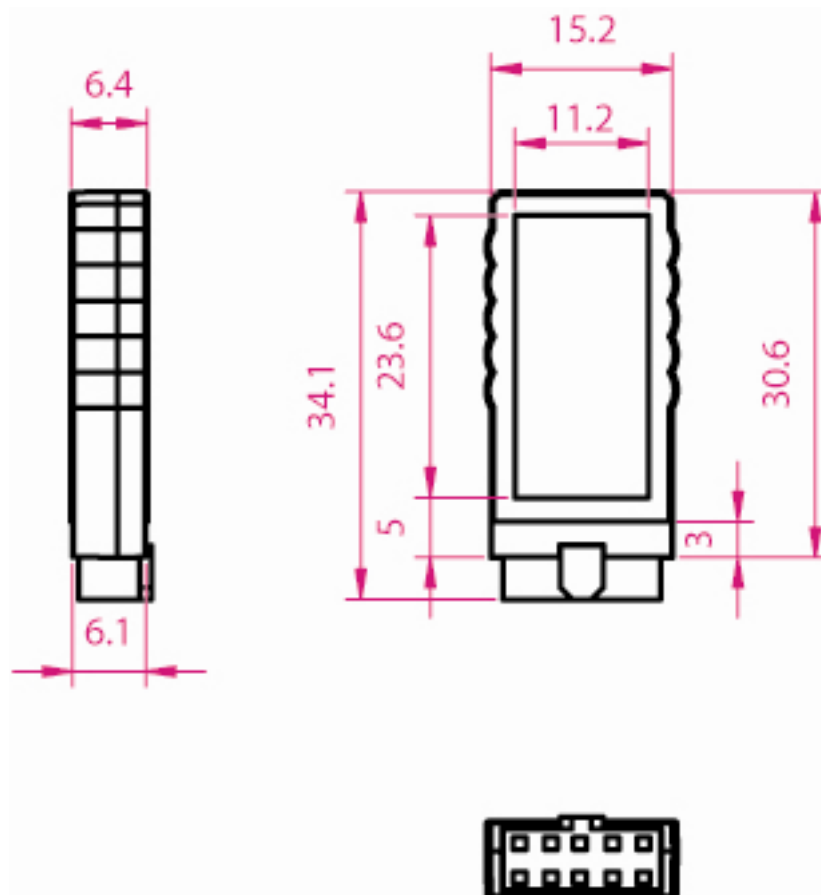


Figure 7

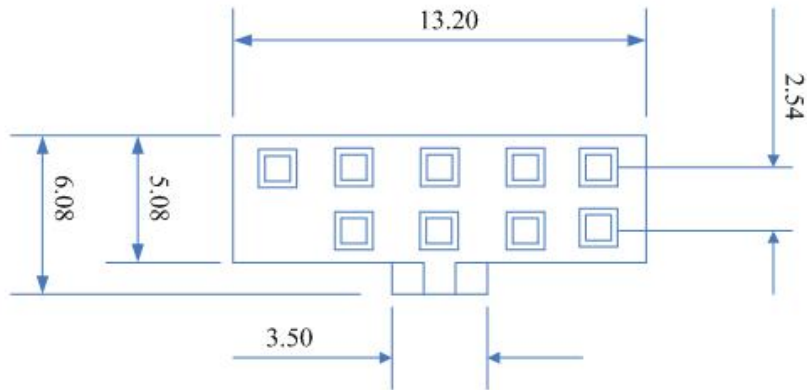
5. Mechanical



- Dimension: 34.1 x 16.2 x 6.4 (L) x (W) x (H) mm
- Weight: 4g
- Main Unit



- Connector



PART NO	PB-1K-10K0BK003
Date	2006/12/12
Drawn By	
Unit	mm