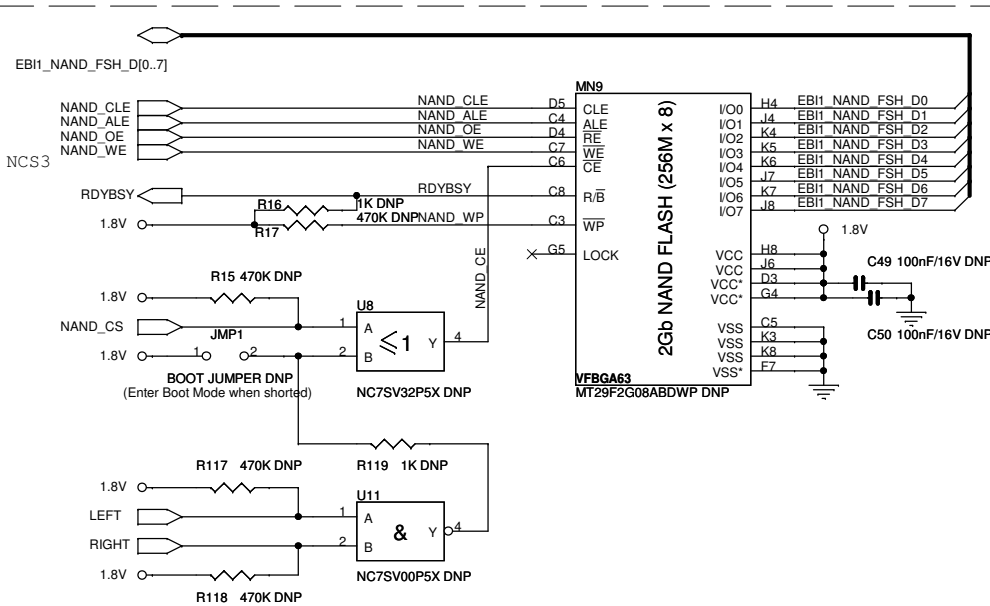
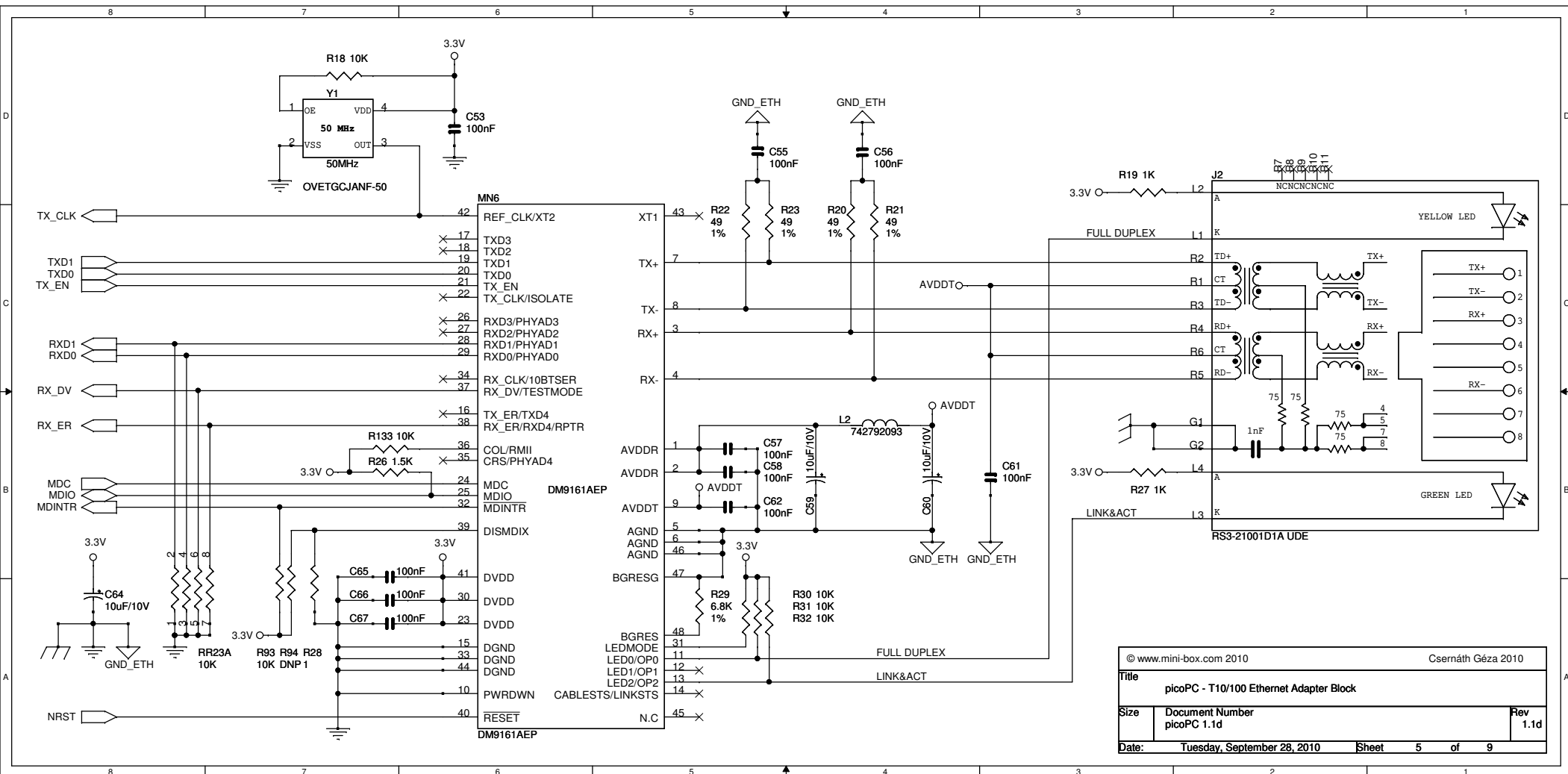


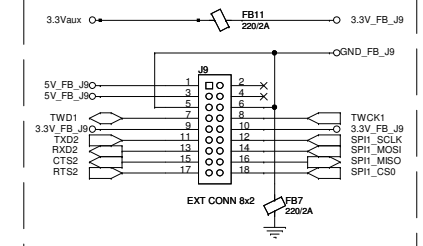
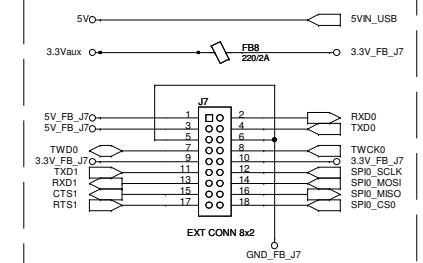
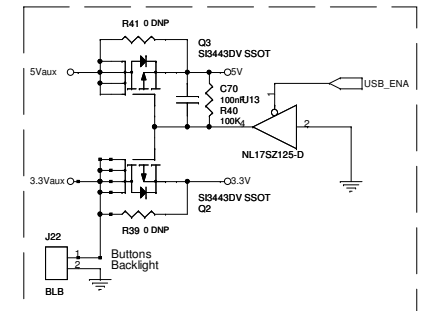
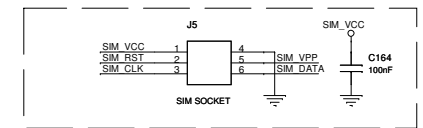
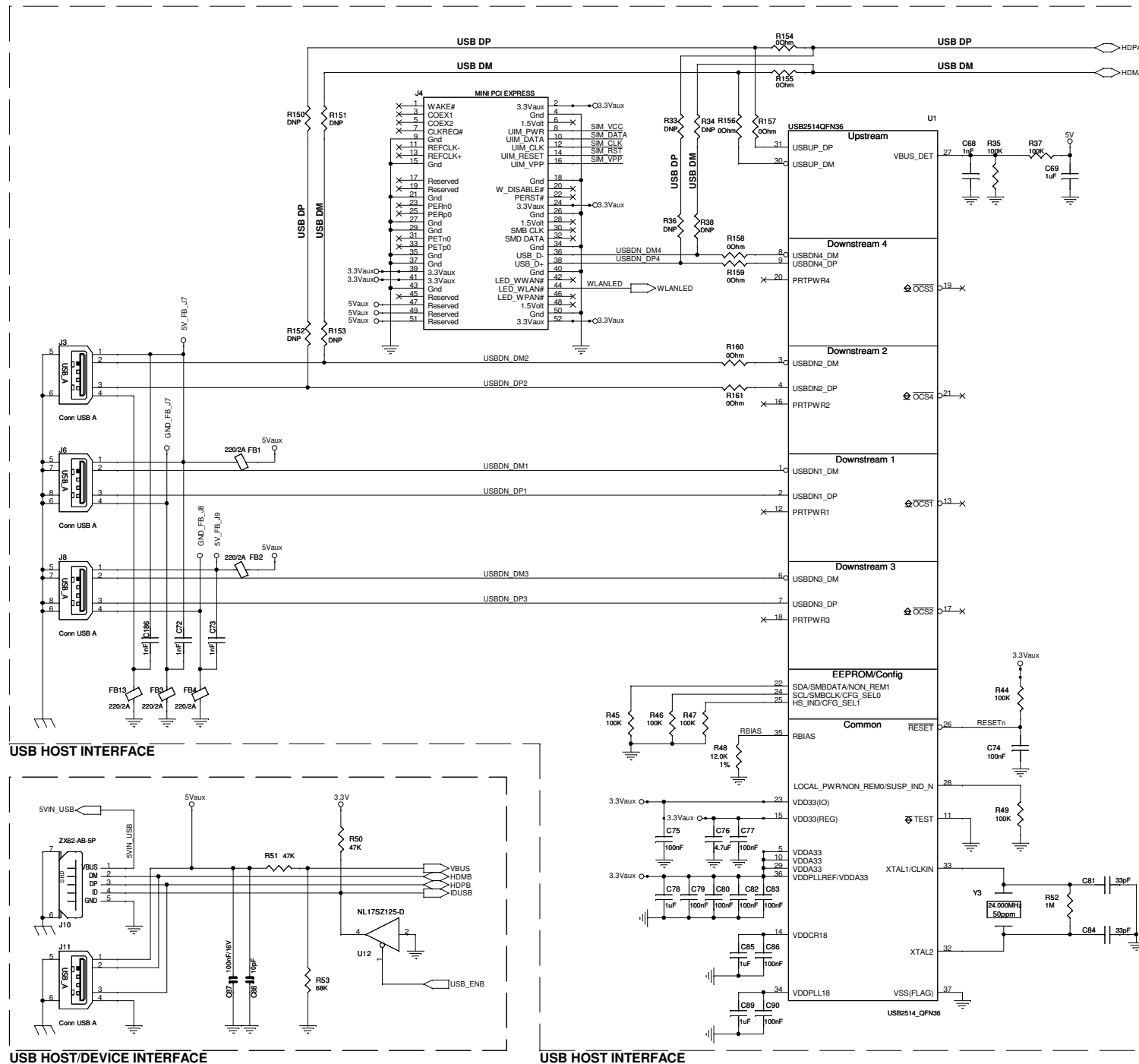
**EBI1 DDR2 SDRAM BANK1 - 128MB, 16bit**



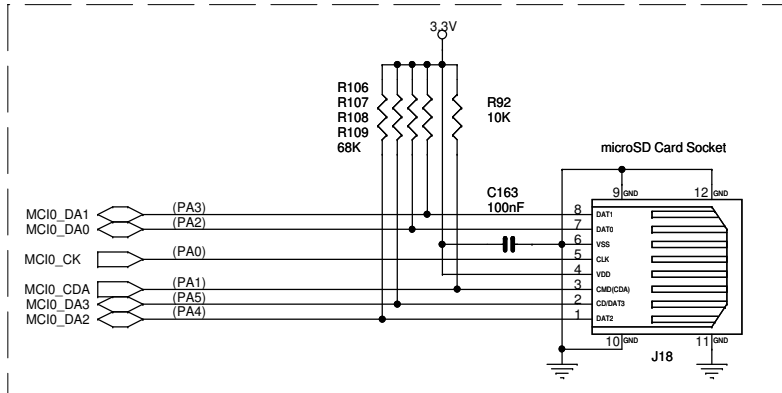
**EBI1 NAND FLASH - 256MB, 8bit**

© www.mini-box.com 2010		Csernáth Géza 2010	
Title			
picoPC - EBI1 DDR2 Memory Block			
Size	Document Number		Rev
	picoPC 1.1d		1.1
Date:	Tuesday, September 28, 2010	Sheet	4 of 9

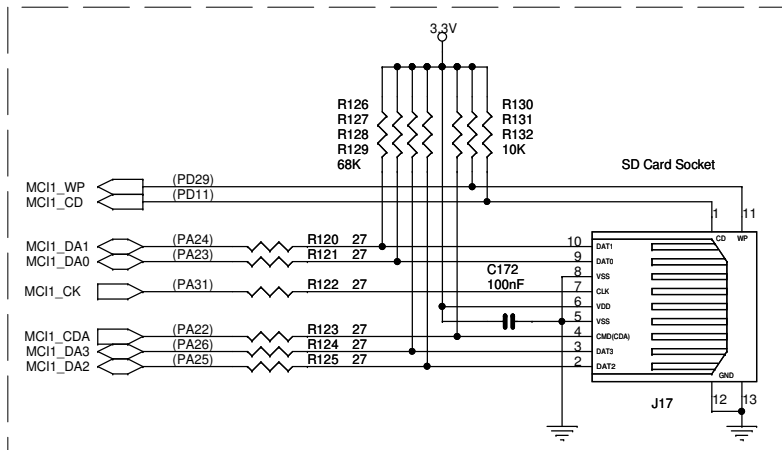




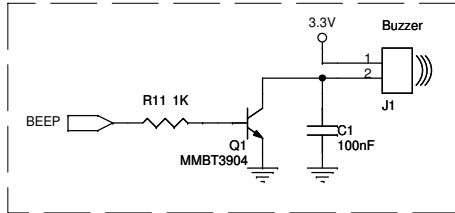
© www.mini-box.com 2010		Csernáth Géza 2010	
Title picoPC - I/O & Communication Ports			
Size	Document Number picoPC 1.1d	Rev 1.1d	
Date:	Tuesday, September 28, 2010	Sheet	6 of 9



**MicroSD CARD INTERFACE - MCI0 (Bootable)**

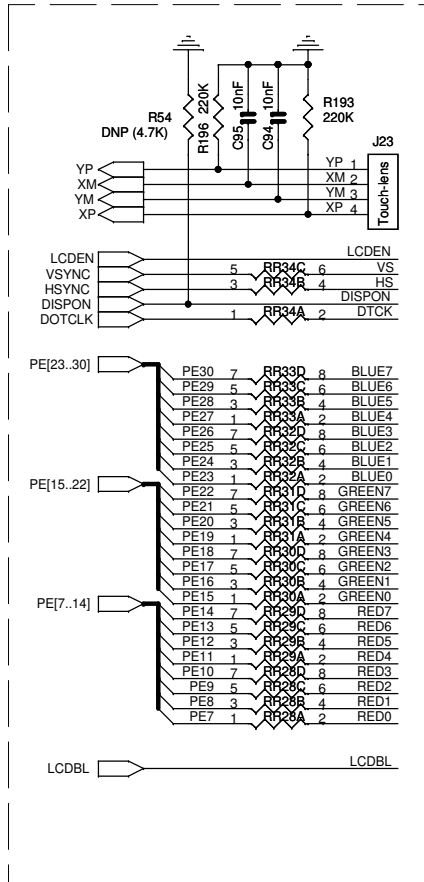


**SD CARD INTERFACE - MCI1 (NON-Bootable)**

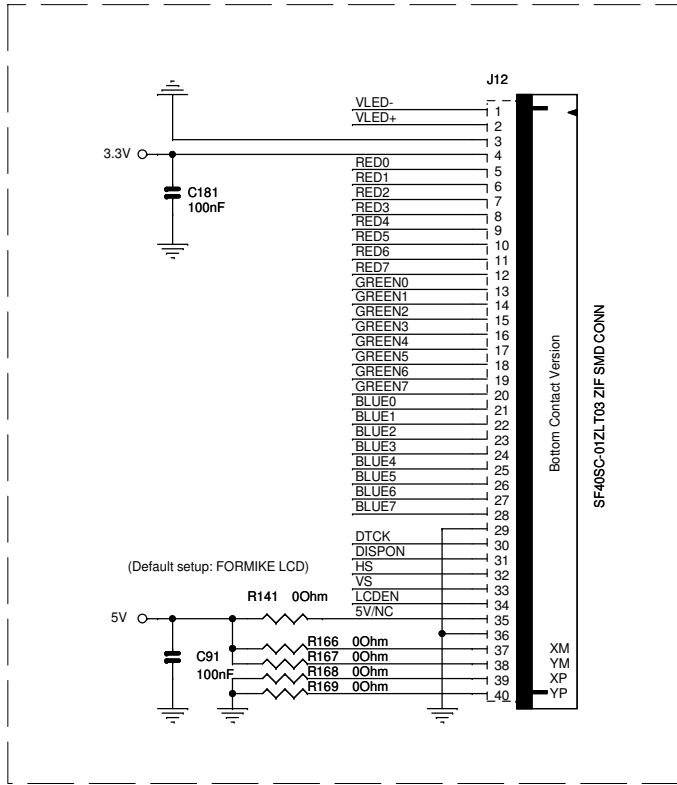


**BEEPER**

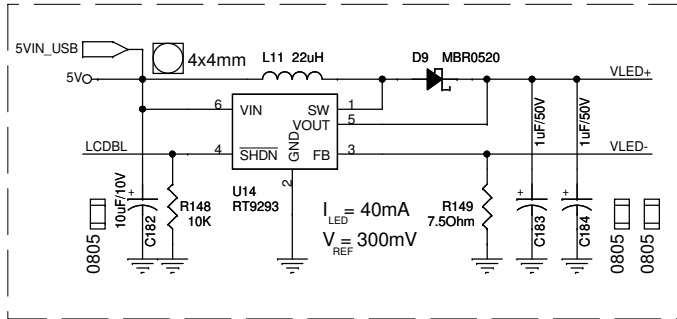
© www.mini-box.com 2010		Csernák Géza 2010	
Title		picoPC - 320x240 24bit color LCD - LCD & Backlight Connector Block	
Size		picoPC - MicroSD/SD Card Interface and Beeper	
Date:		Document Number	Rev
Tuesday, September 28, 2010		picoPC 1.1d	1.1d
Sheet		7 of 9	



**LCD Data/Cmd.-line Imp. Adaptor**



**LCD Module Connector**



**Backlight Power Supply (40mA Booster)**

